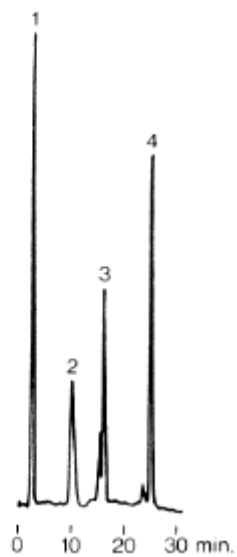


Sample:

1. Myoglobin
2. Ribonuclease A
3. Chymotrypsinogen A
4. Lysozyme



Column : Shodex Asahipak ES-502C 7C (7.6mmID*100mm)
Eluent : (A); 50mM Sodium phosphate buffer(pH7.0)
(B); (A) + 0.5M NaCl
Linear gradient: 0min to 20min, (A) to (B)
Flow rate : 1.0mL/min
Detector : UV(280nm)